

**CERTIFIED LAND CORNER RECORDATION**

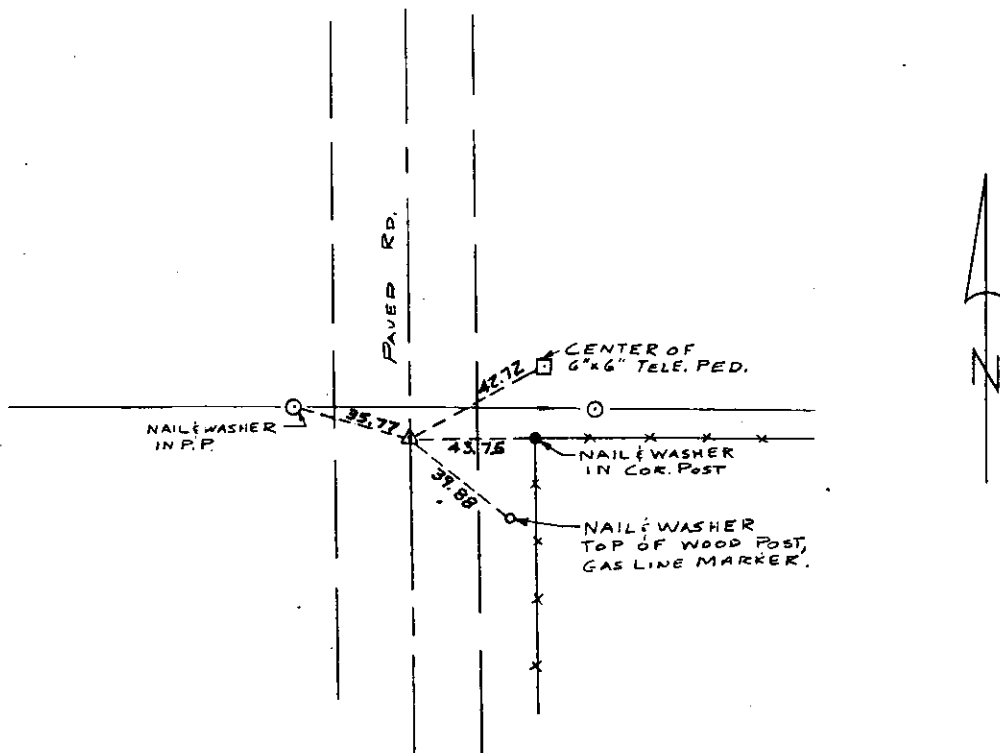
**DESCRIPTION OF CORNER EVIDENCE FOUND, AND ORIGINAL RECORD (If known)**

LOCATION Found 1" iron pipe bent, 3.5' below road surface @ paved road N-S  
and on fence line east.  
1/4  
S.9 S.10  
T.12N., R.62W.

**DESCRIPTION OF MONUMENT AND ACCESSORIES ESTABLISHED TO PERPETUATE THE ORIGINAL LOCATION OF THIS CORNER:**

Set 1/2" diameter x 24" long rebar with aluminum cap at surface.

**SKETCH, WITH COURSE AND DISTANCE TO ADJACENT CORNER IF DETERMINED IN THIS SURVEY.  
(May Sketch or Paste Reproduction on Reverse Side.)**



I, JOHN A. STEIL certify that I have carefully performed or reviewed the work done on the diagrammed corner as reported on this recordation form and approve the same.

John A. Steil  
Signature of Surveyor

2500  
Registration No.

STATE OF WYOMING,  
Office of Clerk and Recorder,  
County of Saramie

**567997**

This "corner record" was filed for record on the FEB 15 1980 day of 19, was noted on the cross-index plat and is assigned page No.         , in book No.         

James C. Whitehead  
County Official

Cross Index No.	T. <u>        </u>	R. <u>        </u>	Mer.
<u>013</u>	T. <u>12</u>	R. <u>62</u>	Mer.
_____	T. _____	R. _____	Mer.
_____	T. _____	R. _____	Mer.
_____	T. _____	R. _____	Mer.
_____	T. _____	R. _____	Mer.
_____	T. _____	R. _____	Mer.

G-13 12-62

567997

Photographed.....

Indexed.....

Posted.....

Assessor.....